

southco

SOUTHCO No. C5 SEALED LEVER LATCH

DATE	DRAWN	CHKD	SCALE
26 APR 94	ESK		3/4

DRAWING NUMBER
J-C5-4

ASSEMBLY PART NUMBERS AND DESCRIPTION

PANEL THICKNESS (mm)	EXTRA LONG* LEVER GRIP RANGE	BLACK ASSEMBLY WITH PLATED STEEL HARDWARE	BLACK ASSEMBLY WITH STAINLESS STEEL HARDWARE	SILVER ASSEMBLY WITH PLATED STEEL HARDWARE	SILVER ASSEMBLY WITH STAINLESS STEEL HARDWARE	CARDINAL WHITE ASSEMBLY WITH PLATED STEEL HARDWARE	CARDINAL WHITE ASSEMBLY WITH STAINLESS STEEL HARDWARE
1-11	45-57	C5-11-45	C5-11-46	C5-11-43	C5-11-44	C5-11-41	C5-11-42
11-21		C5-12-45	C5-12-46	C5-12-43	C5-12-44	C5-12-41	C5-12-42
21-31		C5-13-45	C5-13-46	C5-13-43	C5-13-44	C5-13-41	C5-13-42
31-41		C5-14-45	C5-14-46	C5-14-43	C5-14-44	C5-14-41	C5-14-42

MATERIAL AND FINISH

LATCH ASSEMBLY CONSISTS OF:
HOUSING, HANDLE AND BUTTON:
DIE CAST ZINC, SEE TABLE FOR FINISH.
LEVER AND CRANK: DIE CAST ZINC, COATED WITH CLEAR CHEMICAL PROTECTIVE FILM.
BLACK TORSION SPRING: 303 STAINLESS STEEL, PASSIVATED.
ROLL PINS: 420 STAINLESS STEEL, PASSIVATED.
O-RINGS: BUNA-N RUBBER, BLACK.

HARDWARE CONSISTS OF:

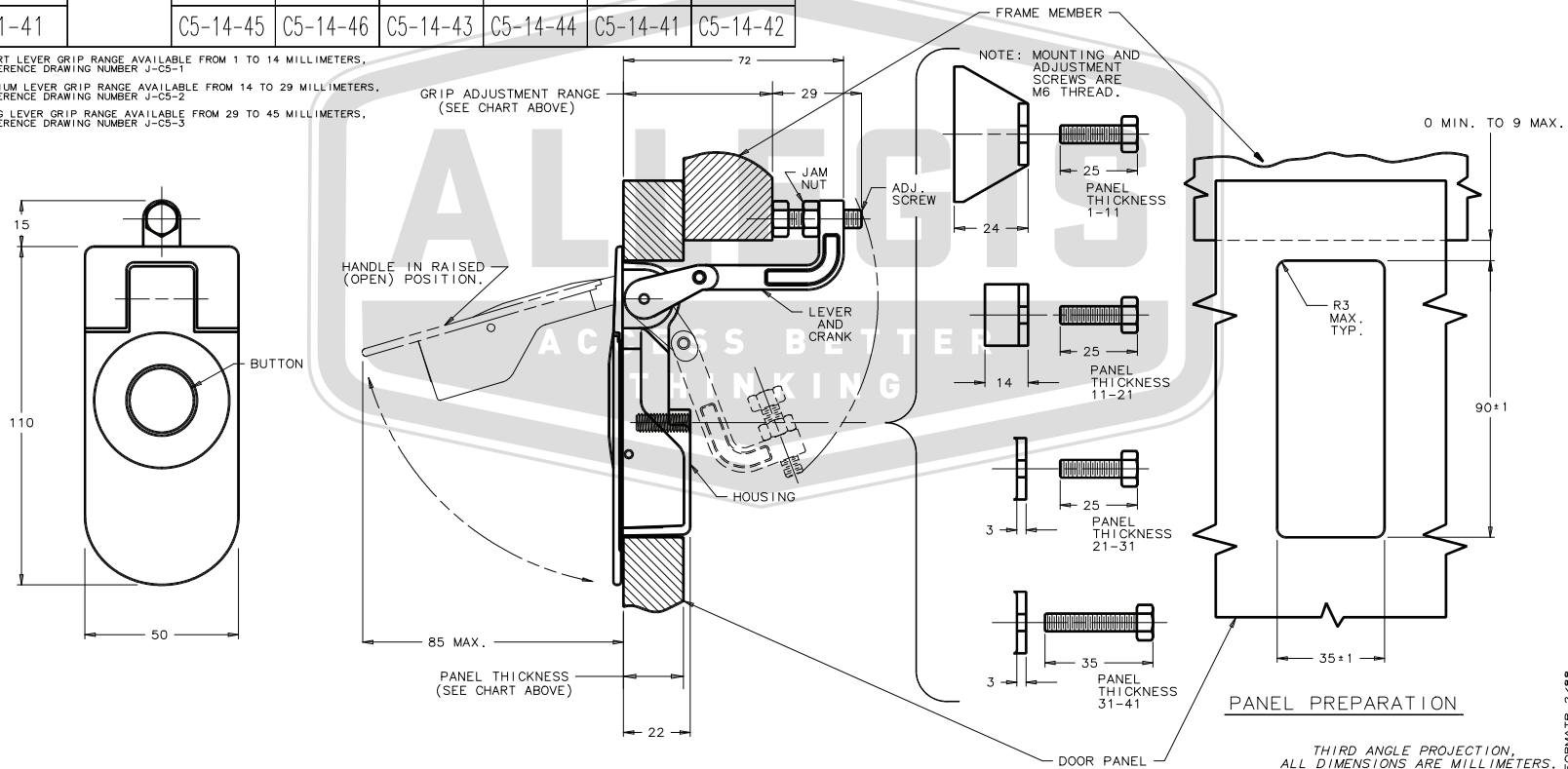
MOUNTING BRACKET
MOUNTING SCREW
ADJUSTING SCREW
JAM NUT

1010 STEEL, ZINC PLATED WITH SEALED CHROMATE.
OR
300 SERIES STAINLESS STEEL, PASSIVATED.

*SHORT LEVER GRIP RANGE AVAILABLE FROM 1 TO 14 MILLIMETERS, REFERENCE DRAWING NUMBER J-C5-1

MEDIUM LEVER GRIP RANGE AVAILABLE FROM 14 TO 29 MILLIMETERS, REFERENCE DRAWING NUMBER J-C5-2

LONG LEVER GRIP RANGE AVAILABLE FROM 29 TO 45 MILLIMETERS, REFERENCE DRAWING NUMBER J-C5-3



THIRD ANGLE PROJECTION, ALL DIMENSIONS ARE MILLIMETERS.

FORMAT 2/85

ALLEGIS

1-866-378-7550

MATERIAL:
Zinc Alloy

DRAWING NO. :
C5-11-45

FINISH:
Black Powder Coat

REV. :
1:1

DATE:
5/23/2019